



®

2500 GIANT ROCK REMOVAL

Published:

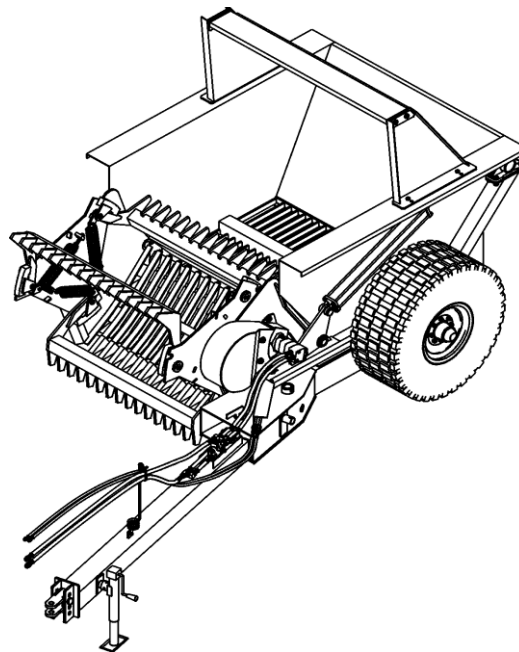
S/N R10010818303 – R10011097506 inclusive

Part No. R100-010P

PARTS MANUAL



An Operators Manual with **IMPORTANT** Safety, Assembly, Operation and Maintenance information was packaged with this Parts Manual during final inspection at the factory. If the Operators Manual is missing at any time, please contact Schulte Industries Ltd. At (306) 287-3715 to receive your free replacement manual.



**Herder –
Implementos e
Máquinas Agrícolas
Ltda.**

Av. 3, nº 211
Parque Industrial Toriba
Matão/SP
Tel. (16) 3382-8010
Fax: (16) 3384-4980

Web: www.schulte.ca

Internet: www.herderdobrasil.com.br

Email: info@herderdobrasil.com.br



© 2010 Alamo Group

Parts Ordering Guide

The following instructions are offered to help eliminate delay and error in processing purchase orders for the equipment in this section.

1. The Purchase Order must include the name and address of the person or organization ordering the parts, who should be charged, and if possible, the serial number of the machine for which the parts were ordered.
2. The Purchase Order must clearly list the quantity of each part, the complete and correct part number, and the description of the part.
3. Schulte Industries Ltd reserves the right to substitute parts where applicable.
4. Schulte Industries Ltd reserves the right to change prices without prior notice.

NOTE: Please refer to the Safety Section in the front of the Operators Manual for the proper Part Number when ordering Replacement Safety Decals. Safety decals are available free of charge from the Schulte Parts Department.

NOTE: If the Operators Manual does not accompany this Parts Manual please obtain one, free of charge from the Schulte Parts Department. DO NOT operate this implement unless you READ, UNDERSTAND, and FOLLOW the Safety and Operation instructions contained in the Operators Manual

NOTE: Please note that the appearance of some parts may vary from the artwork shown in the Manual.



For maximum safety and to guarantee optimum product reliability, always use genuine Schulte Parts. The use of inferior replacement parts may cause premature or catastrophic failure, which could result in serious injury or death. Direct any questions regarding parts to:

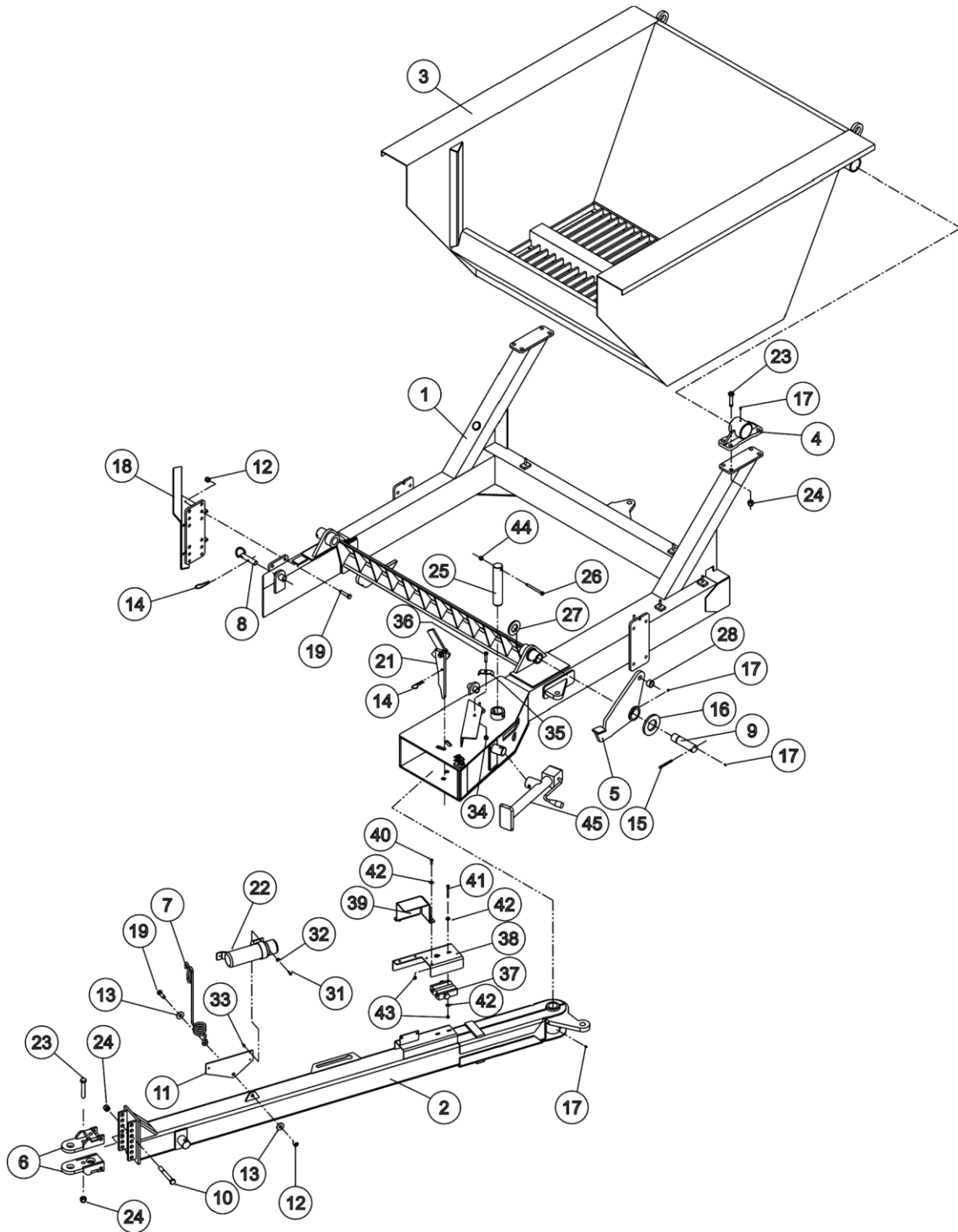
Schulte Industries Ltd @
P.O. Box 70
Englefeld, Saskatchewan
Canada S0K 1N0
Phone: (306)-287-3715
Parts Fax: (306) 287-4066
Email: info@schulte.ca



PART NAME INDEX

2500 GIANT - MAIN FRAME - REV 2007-09.....	4
2500 GIANT - REEL AND GRATE - REV 2010-05.....	6
2500 GIANT - HARDOX REEL AND GRATE - REV 2011-02.....	8
2500 GIANT - HUB & AXLE - REV 2003-01.....	10
2500 GIANT - ROCK DEFLECTOR KIT - REV 2003-02.....	12
2500 GIANT - HYDRAULIC CIRCUIT - REV 2013-01.....	14
2500 GIANT - HYDRAULIC DRIVE KIT - REV 2010-05.....	16
2500 GIANT - FLOW CONTROL KIT - REV 2010-05.....	18
2500 GIANT - MOTOR, 116-006 - REV 2003-01.....	19
2500 GIANT - REEL TYPE MOTOR VALVE KIT - REV 2003-02.....	20
2500 GIANT - MOTOR VALVE KIT (ELECTRICAL) - REV 2005-03.....	21
2500 GIANT - HYDRAULIC CYLINDER, 100-3271H - REV 2013-01.....	22
2500 GIANT - SWING HITCH OPTION - REV 2013-01.....	23
2500 GIANT - HYDRAULIC CYLINDER, 100-3252H - REV 2013-01.....	24
2500 GIANT - CE SHIELDING - REV 2013-09.....	26
2500 GIANT - SAFETY CHAIN S000-010 - REV 2007-01.....	28
2500 GIANT - TRANSPORT LIGHT KIT S000-035 - REV 2014-11.....	29
2500 GIANT - EUROPEAN LIGHT KIT - REV 2013-11.....	30

2500 GIANT- MAIN FRAME- REV 2007-09



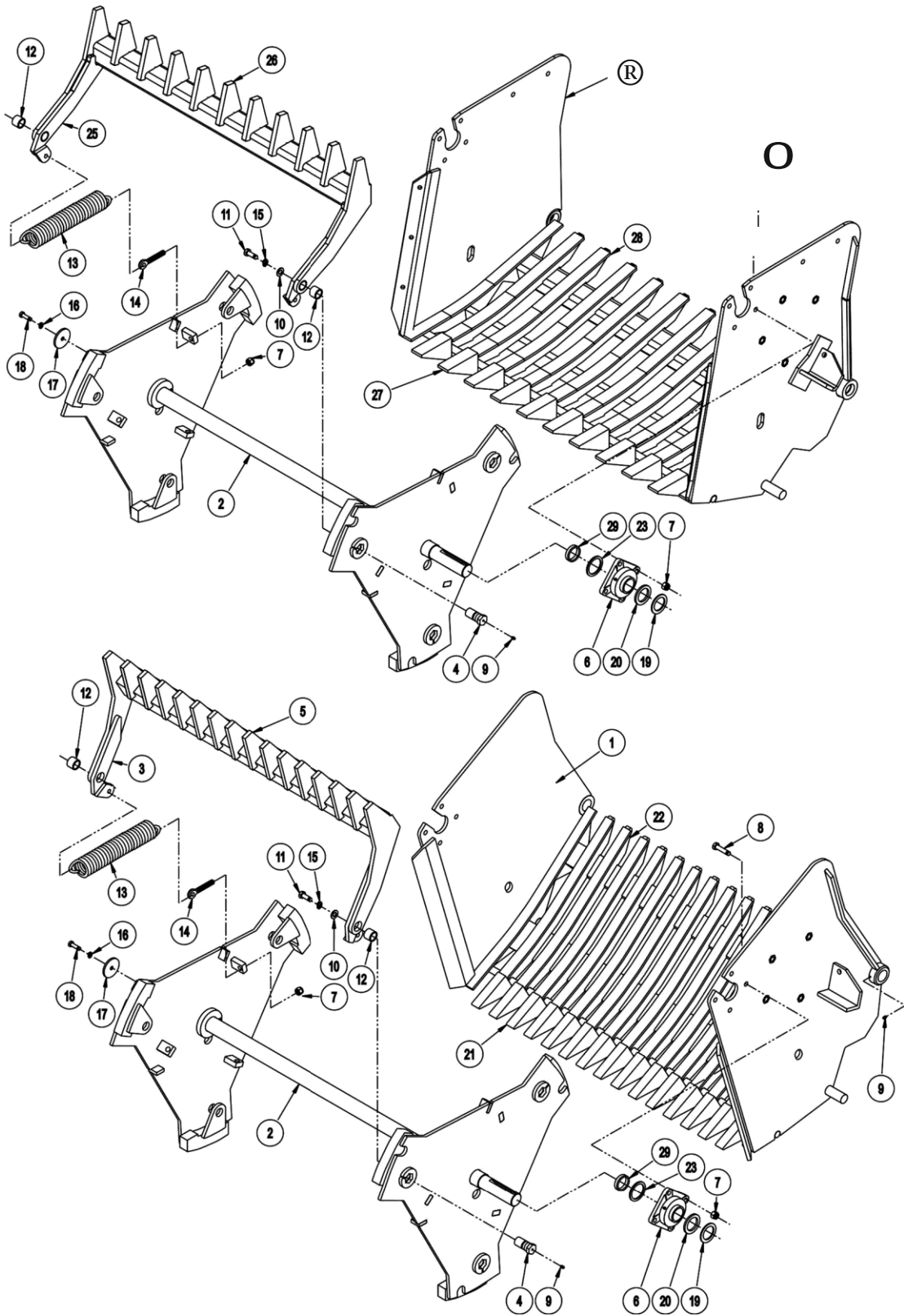
ITEM	PART NO.	QTY.	DESCRIPTION
	R100-101		MAINFRAME
2	R400-110		HITCH POLE

2500 GIANT- MAIN FRAME- REV 2007-09

Continued...

ITEM	PART NO.	QTY.	DESCRIPTION
3	R100-120	1	BUCKET
4	R100-130	2	BUCKET BEARING
5	R100-127	2	LIFT LINK
6	R000-112	2	CLEVIS HALF
7	228-012	1	HOSE ORGANIZER
8	R100-105	2	GRATE LOCK-UP PIN
9	R100-117	2	GRATE PIN
10	250-107	2	BOLT, 3/4 X 6 UNC
11	C000-355	1	MANUAL MOUNT
12	270-004	5	LOCK NUT, 5/8 UNC
13	256-006	2	FLAT WASHER 5/8"
14	271-051	3	HAIRPIN, 3/16 WIRE
15	262-009	2	ROLL PIN, 3/8 X 3-1/2
16	256-052	2	FLAT WASHER, 2-1/2 X 3-9/16
17	273-006	5	GREASE NIPPLE, SELF TAPPING
18	90-05	1	ROCK DEFLECTOR
19	250-090	5	BOLT, 5/8 X 2
21	R100-114	1	WEDGE LOCK ASSEMBLY, GIANT
22	280-202	1	4" PLASTIC MANUAL CANISTER
23	250-114	9	BOLT, 3/4 X 2-1/2 UNC
24	270-001	12	LOCK NUT, 3/4 UNC
25	R100-116	1	HITCH PIVOT PIN
26	250-049	1	BOLT, 1/2 X 4 UNC
27	256-079	-	BUSHING, 1-3/4 X 3 X 10GA.
	256-081	-	BUSHING, 1-3/4 X 3 X 14GA.
28	362-010	2	TENSION BUSH. 1 X 1-1/4 X 3/4
31	250-002	3	BOLT, 1/4 X 1 UNC
32	256-018	3	WASHER, 1/4"
33	270-025	3	LOCK NUT, 1/4" UNC
34	270-017	1	LOCK NUT, 3/8" UNC
35	C000-001	1	CLAMP, HYDRAULIC HOSE AND TUBE, 1/2"
36	250-023	1	BOLT, 3/8" X 1 3/4" UNC
37	130-0020	1	CROSSOVER RELIEF VALVE
38	R400-174	1	CUSHION VALVE SHIELD
39	R400-175	1	FLOW CONTROL SHIELD (USED WITH R100-201)
40	250-007	4	BOLT, 5/16 X 1" UNC
41	250-013	2	BOLT, 5/16 X 3" UNC
42	256-020	6	WASHER, 5/16"
43	270-020	6	LOCKNUT, 5/16" UNC
44	270-007	1	LOCKNUT 1/2" UNC PLATED
45	232-575	1	SCREW JACK SIDE WIND 10"

2500 GIANT - REEL AND GRATE - REV 2010-05



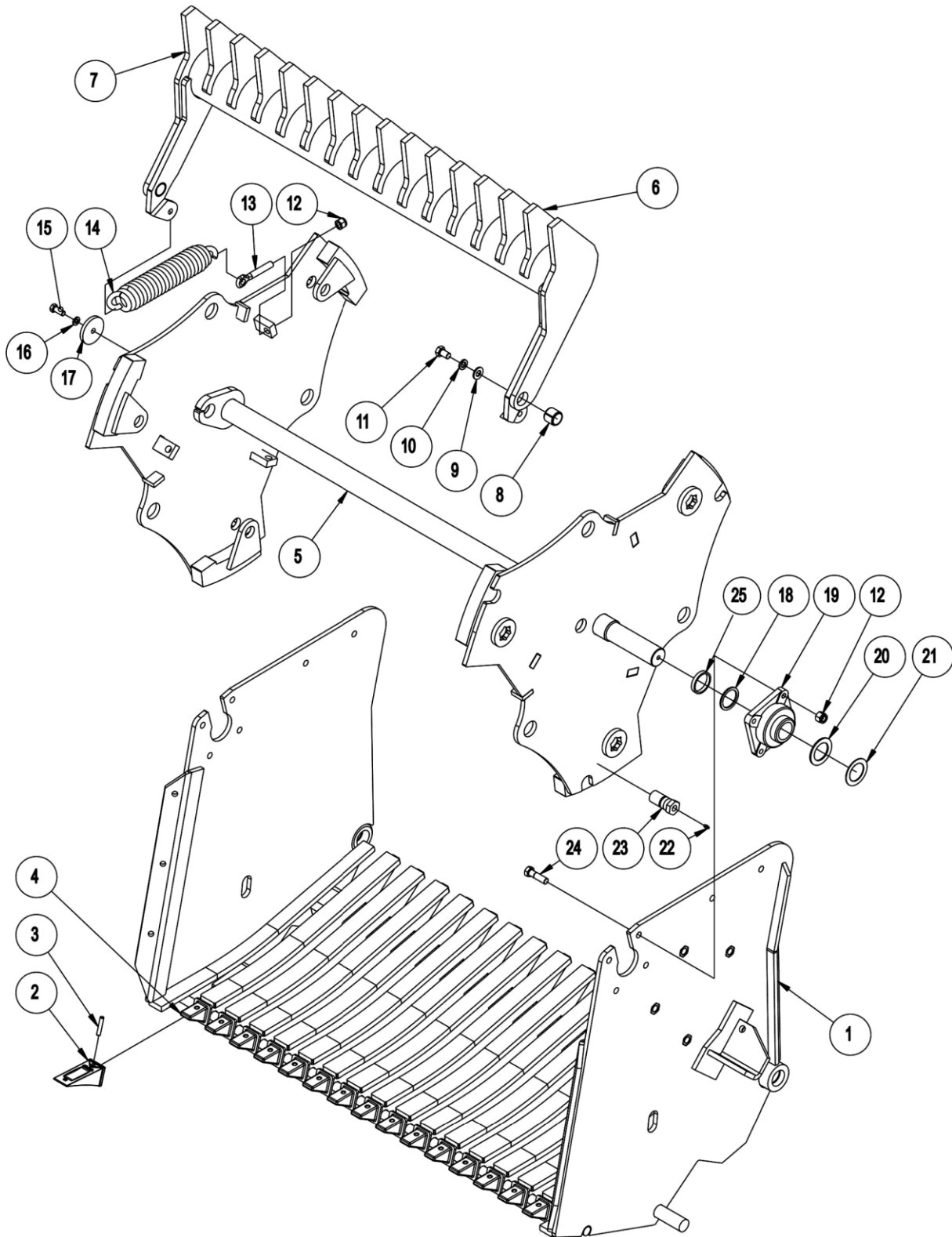
2500 GIANT REV 2013-01

2500 GIANT - REEL AND GRATE - REV 2010-05

Continued...

ITEM	PART NO.	QTY.	DESCRIPTION
1	R100-175	1	GRATE ASSEMBLY COMPLETE 1-1/2" SPACING
2	R100-160	1	REEL ASSEMBLY
3	60-49	3	BATT COMPLETE
4	230-005	6	REEL PIN HEX HEAD 1.25 DIA.X3"
5	579-034	42	TOOTH 5/8 PLATE 7 DEGREE
6	352-101	2	FLANGE BEARING 2" BORE COMPLETE
	356-100	2	BEARING INSERT 2" R/R
7	270-004	14	LOCKNUT 5/8 UNC PLATED
8	250-089	8	BOLT 5/8 X 2-1/4 UNC GR5 PLATED
9	273-006	8	GREASE NIPPLE SELF-TAP 1/4-28
10	256-006	6	WASHER 5/8"
11	250-099	6	BOLT 5/8 X 1 UNC GR5 PLATED
12	362-004	6	TENSION BUSHING 1-1/4 X 1-1/2 X 1-1/4
13	228-008	6	EXT. SPRING .50 WIRE 2.25" MD
14	258-003	6	EYE BOLT 5/8 X 4 7/32 UNC GR5 PL.
15	255-005	6	LOCKWASHER 5/8
16	255-009	1	LOCKWASHER 1/2
17	590-600	1	WASHER REEL STOP
18	250-061	1	BOLT 1/2 X 1-1/4 UNC GR5
19	256-073	1	MACHINE BUSHING 2 X 3 X 14 GA.
20	256-053	1	MACHINE BUSHING 2 X 3 X 10 GA.
21	570-023	15	WELD TIP 2"
22	R100-177	15	REPL. TIP T-IRON 1-1/2" SPACING
23	256-0532	1	MACHINE BUSHING 2 X 2-1/2 X 14 GA
	256-0531	1	MACHINE BUSHING 2 X 2-1/2 X 10 GA
24	R100-145	1	GRATE ASSEMBLY 3-9/32 SPACING
25	R100-150	1	BATT ASSEMBLY WIDE SPACING
26	577-416	27	PICKER TOOTH WIDE GRATE
27	570-023	9	WELD ON TOOTH
28	R100-177	9	T-IRON, COMPLETE
29	874-006	2	REEL SPACER

2500 GIANT- HARDOX REEL AND GRATE- REV 2011-02

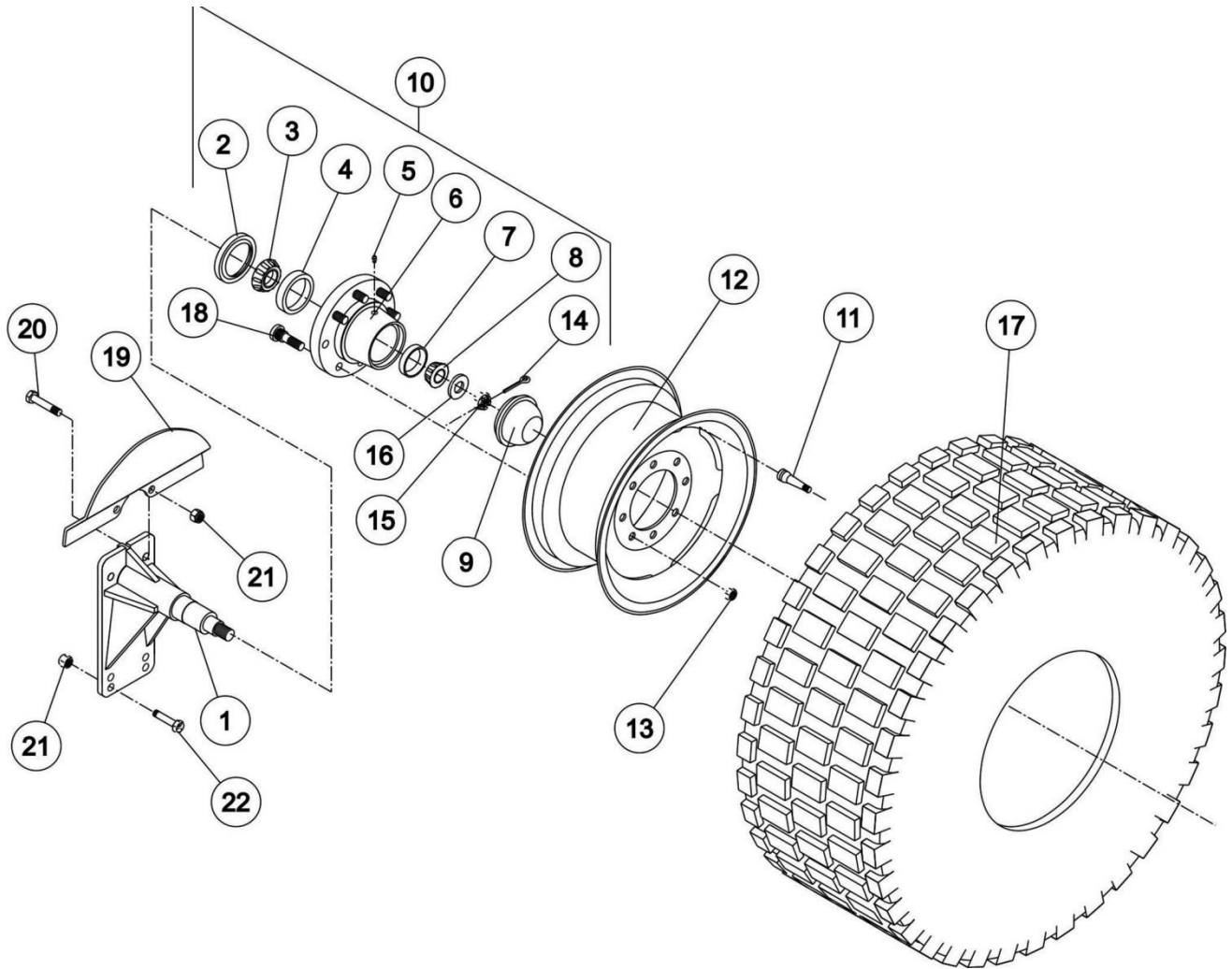


2500 GIANT REV 2013-01

2500 GIANT- HARDOX REEL AND GRATE- REV 2011-02

Continued...

ITEM	PART NO.	QTY.	DESCRIPTION
1	R100-170	1	HARDOX & REPLACEABLE TEETH GRATE ASSEMBLY
2	231-028	15	CAST TOOTH: REPLACEABLE
3	262-016	15	ROLL PIN: SPIRAL: .4 X 2"
4	231-027	15	CAST TOOTH RETENTION NOSE
5	R100-160	1	REEL ASSEMBLY:
6	6095-001	42	WIDE GRATE PICKER TOOTH
7	R100-195	3	BATT ASSEMBLY: ROUND TUBE: HARDOX 450
8	362-004	6	TENSION BUSHING: 1-1/4" X 1-1/2" X 1-1/4" LG.
9	256-006	6	WASHER: 5/8":
10	255-005	6	LOCKWASHER: 5/8
11	250-099	6	BOLT: 5/8 X 1 UNC: GR5: PLATED:
12	270-004	14	LOCKNUT: 5/8 UNC: PLATED
13	258-003	6	EYE BOLT: 5/8 X 4 7/32: UNC: GR5: PLATED
14	228-008	6	EXTENSION SPRING: .50 WIRE: 2.25" MD: ASTM A401
15	250-061	1	BOLT: 1/2 X 1-1/4 UNC: GR5:
16	255-009	1	LOCKWASHER: 1/2
17	590-600	1	WASHER: REEL STOP
18	256-0531	1	MACHINE BUSHING: 2" ID X 2-1/2" OD X 10 GA: BLACK
	256-0532	1	MACHINE BUSHING: 2" ID X 2-1/2" OD X 14 GA: BLACK
19	352-101	2	FLANGE BEARING: 2" BORE: COMPLETE
	356-100	2	BEARING INSERT: 2` :R/R
20	256-053	1	MACHINE BUSHING: 2 X 3 X 10 GA.
21	256-073	1	MACHINE BUSHING: 2 X 3 X 14 GA.
22	273-006	6	GREASE NIPPLE: SELF-TAP: 1/4-28
23	230-005	6	REEL PIN: HEX HEAD: 1.25 DIA. X 3":
24	250-089	8	BOLT: 5/8 X 2-1/4 UNC: GR 5: PLATED
25	874-006	2	REEL SPACER



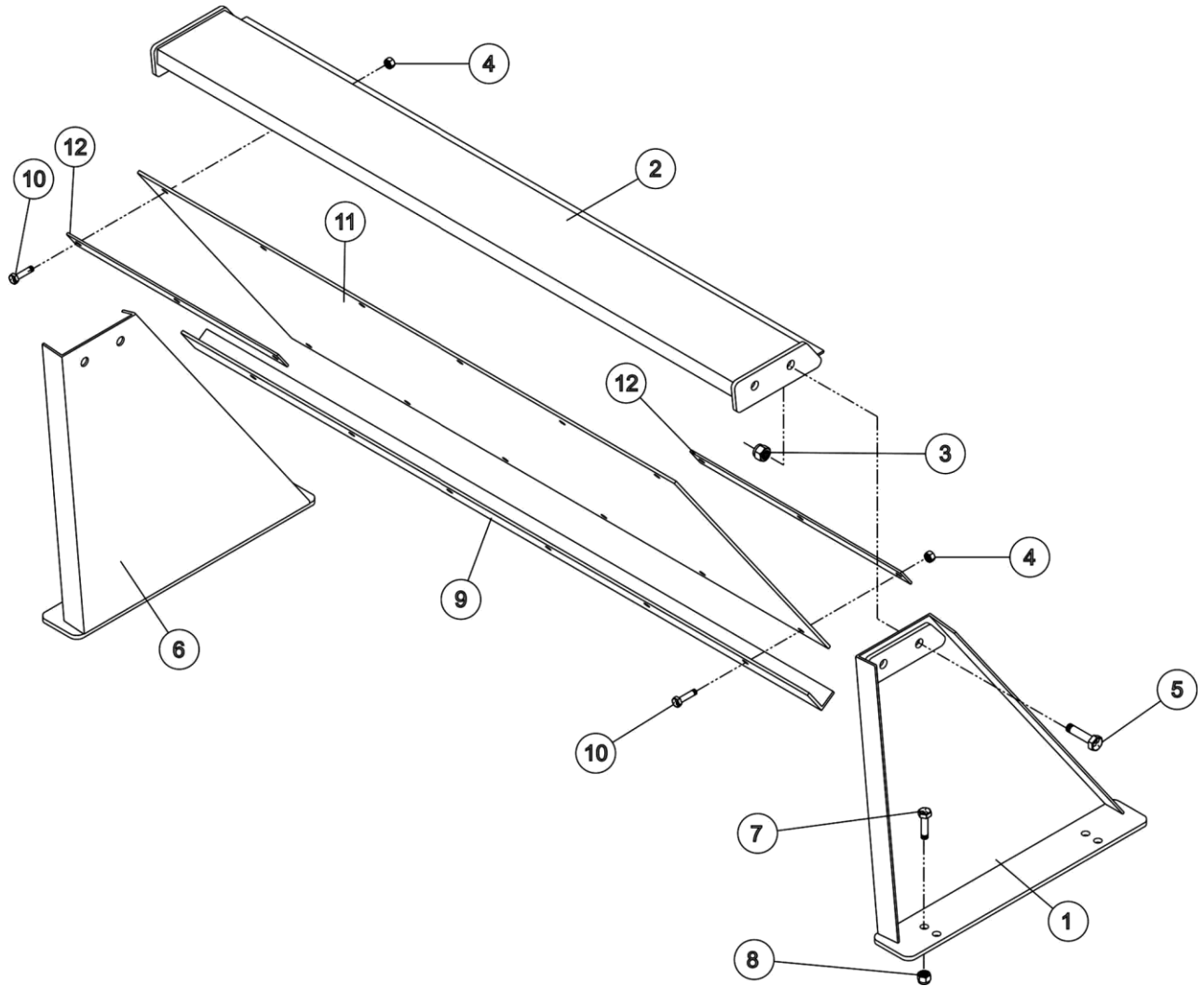
LEFT SIDE SHOWN

2500 GIANT- HUB & AXLE- REV 2015-05

Continued...

ITEM	PART NO.	QTY.	DESCRIPTION
1	R100-140	2	AXLE PLATE ASSEMBLY
2	207-005	2	SEAL
3	207-001	2	BEARING, INNER
4	207-002	2	RACE, INNER
5	273-006	2	GREASE ZERK, SELF TAPPING
6	205-001	2	HUB C/W OUTER RACES
7	207-004	2	RACE, OUTER
8	207-003	2	BEARING, OUTER
9	207-006	2	DUST CAP
10	206-011	2	HUB, C/W ITEMS#2-9
11	211-002	2	VALVE
12	201-006	2	WHEEL, SW14C X 16.1, 8 BOLT
13	207-060	16	WHEEL NUT
14	271-005	2	COTTER PIN, 3/16 X 1-1/2
15	209-011	2	CASTLE NUT, 1"-14 UNF
16	209-010	2	WASHER
17	210-172	2	TIRE, 16.5L X 16.1 SL, 6 PLY
	210-502	2	TIRE, 16.5L X 16.1, 10 PLY
18	207-047	16	WHEEL STUD
19	590-1054	2	WHEEL GUARD
20	250-089	4	BOLT, 5/8 X 2-1/4 UNC
21	270-004	8	LOCK NUT, 5/8" UNC
22	250-090	4	BOLT, 5/8 X 2 UNC
	90-15	1	WHEEL GUARD KIT (INCL. REF. 19)

2500 GIANT - ROCK DEFLECTOR KIT - REV 2003-02



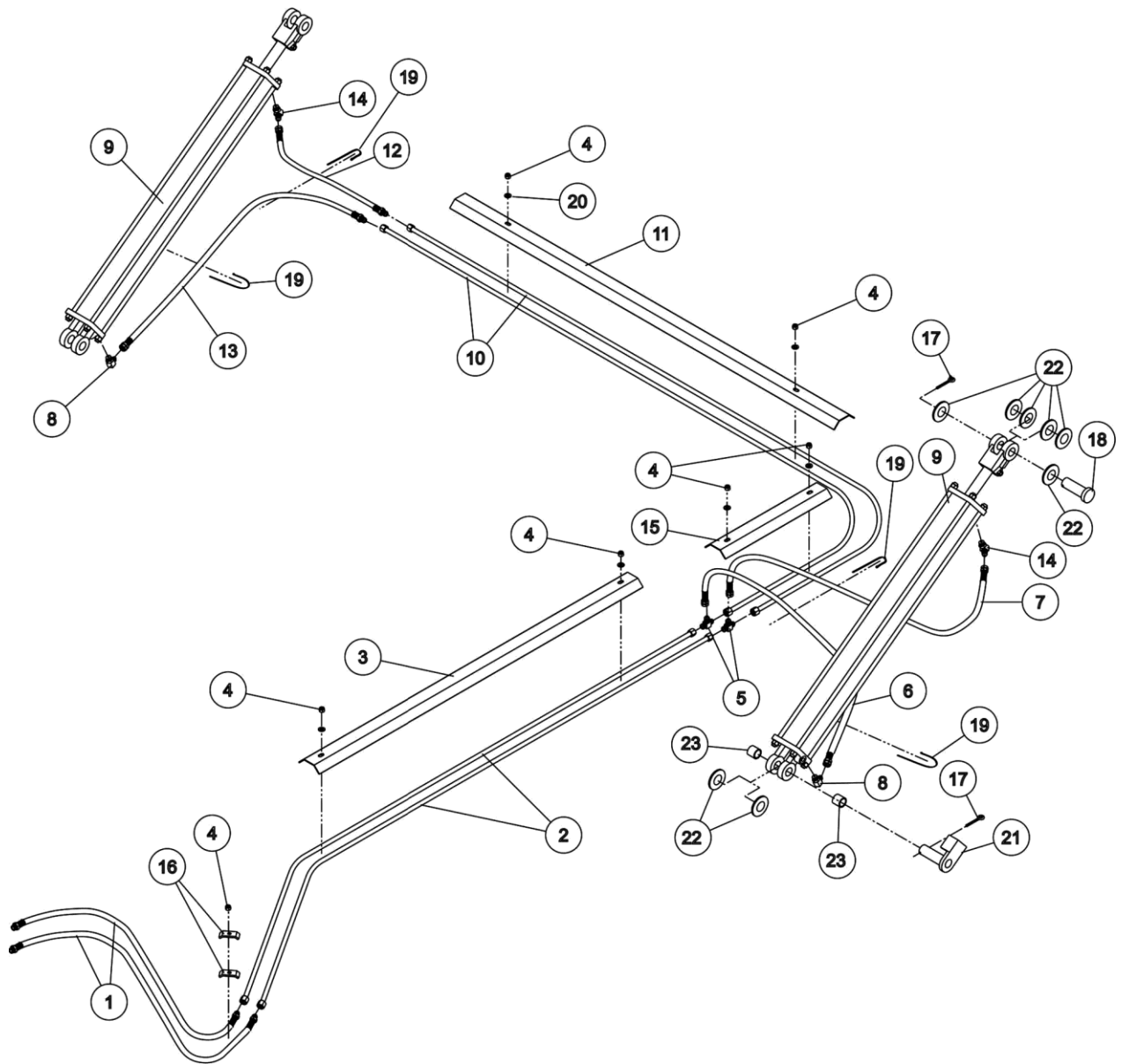
2500 GIANT REV 2013-01

2500 GIANT - ROCK DEFLECTOR KIT - REV 2003-02

Continued...

ITEM	PART NO.	QTY.	DESCRIPTION
1	73-05	1	UPRIGHT, (LEFT)
2	73-03	1	FLAP HANGER
3	270-001	4	LOCKNUT, 3/4" UNC
4	250-007	12	LOCKNUT, 1/2" UNC
5	250-115	4	BOLT, 3/4" X 2" UNC
6	73-04	1	UPRIGHT, (RIGHT)
7	250-095	4	BOLT, 5/8" X 1-1/2" UNC
8	270-004	4	LOCKNUT, 5/8" UNC
9	590-447	1	FLAP BOTTOM ANGLE IRON
10	250-059	12	BOLT, 1/2" X 1-1/2" UNC
11	233-005	1	RUBBER FLAP, 60 X 30, PVC 350
12	520-145	4	FLAP MOUNTING CLAMP

2500 GIANT- HYDRAULIC CIRCUIT- REV 2013-01

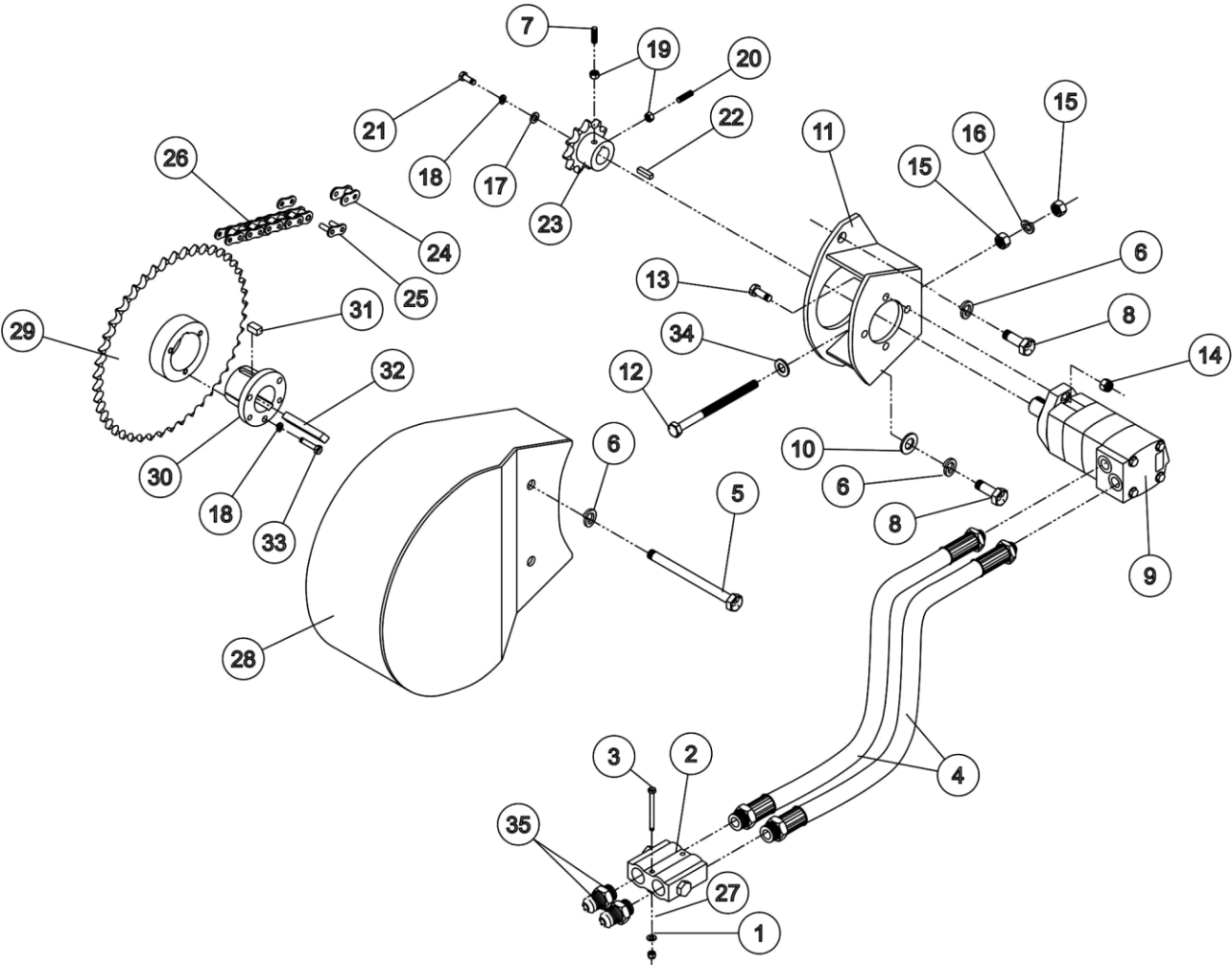


2500 GIANT- HYDRAULIC CIRCUIT- REV 2013-01

Continued...

ITEM	PART NO.	QTY.	DESCRIPTION
1	111-330	2	HYD. HOSE, 3/8 X 140", 8FJIC X 8 MORB W/ PIONEER END
2	126-119	2	TUBE ASSEMBLY ASPER DRAWING
3	525-197	1	SHOP PART
4	270-017	7	LOCKNUT, 3/8 UNC, PLATED
5	108-005	2	MALE TEE, 3/4-16 JIC 37 DEG,
6	111-228	1	HYD. HOSE 3/8" X 45", 8FJIC X 8FJIC
7	111-142	1	HYD. HOSE 3/8" X 33", 8FJIC X 8FJIC
8	108-043	2	ELBOW, 90, 3/4-16 ORB MALE X 3/4-16 JIC MALE
9	100-3271H	2	CYL 3X36 1-1/2" ROD ORB PORTS@90
10	126-120	2	TUBE ASSEMBLY ASPER DRAWING
11	525-195	1	TUBE SHIELD,
12	111-151	1	HYD. HOSE 3/8" X 43", 8FJIC X 8MJIC
13	111-121	1	HYD. HOSE 3/8" X 68", 8MJIC X 8FJIC
14	108-044	2	ELBOW, 45, 3/4-16 ORB MALE X 3/4-16 JIC MALE
15	525-196	1	SHOP PART
16	C000-001	2	HOSE AND TUBE CLAMP, 1/2"
17	271-005	4	COTTER PIN, 3/16 X 1-1/2,
18	302-015	2	CLEVIS PIN, 1 X 2-7/8" USEABLE, ZINC DI-CHROMATE
19	280-008	4	CABLE TIE, 15" LONG, UV BLACK, 120 LB. TENSILE
20	256-017	6	WASHER, 3/8",
21	R100-168	2	CYLINDER RETAINER PIN,
22	256-001	16	WASHER, 1", 1-1/16" ID X 2" OD SAE
23	362-010	4	TENSION BUSHING, 1" X 1-1/4" X 3/4" LG.

2500 GIANT - HYDRAULIC DRIVE KIT - REV 2010-05



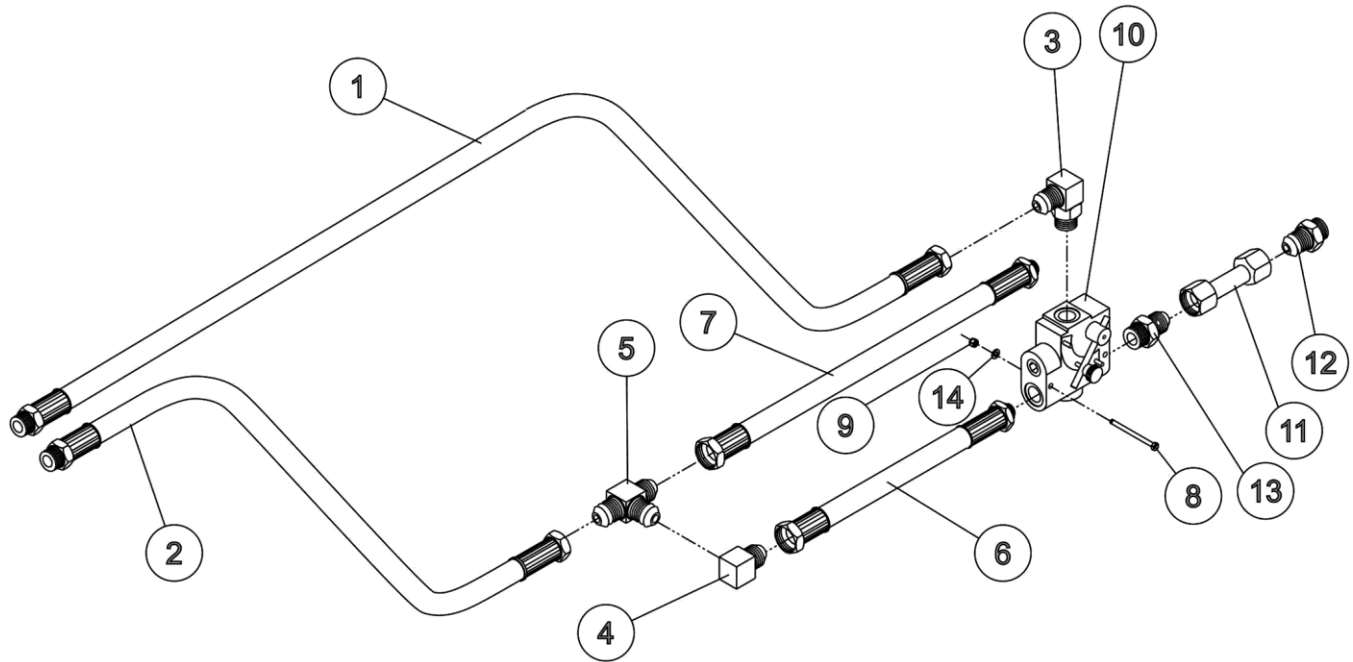
NOTE: ITEM 33-250-019 3/8"x1-1/4" UNC BOLT, TORQUE TO 30FTLBS.

2500 GIANT - HYDRAULIC DRIVE KIT - REV 2010-05

Continued...

ITEM	PART NO.	QTY.	DESCRIPTION
1	270-020	2	LOCK NUT, 5/16 UNC
2	130-0020	1	CROSSOVER RELIEF VALVE, 3/4 ORB
3	250-011	2	BOLT, 5/16 X 2-1/2 UNC
4	111-246	2	HOSE ASSY 39"
5	250-106	2	BOLT, 3/4 X 6-1/2 UNC
6	255-003	4	LOCK WASHER, 3/4"
7	268-022	1	SET SCREW, 3/8 X 3/4 UNC, SQ HD
8	250-116	2	BOLT, 3/4 X 1-1/2 UNC
9	116-006	1	HYD. MOTOR 14.9 CU.IN.-006 SERIES
10	256-003	1	FLAT WASHER, 3/4"
11	61-01	1	HYDRAULIC MOTOR MOUNT
12	250-083	1	BOLT, 5/8 X 5 ALL THREAD UNC PLATED
13	250-057	2	BOLT, 1/2 X 2 UNC
14	270-007	2	LOCK NUT, 1/2 UNC
15	257-019	2	NUT, 5/8 UNC
16	255-005	1	LOCK WASHER, 5/8"
17	256-014	1	FLAT WASHER, 3/8 X 1-1/2 10GA
18	255-013	3	LOCK WASHER, 3/8"
19	257-032	2	NUT, 3/8 UNC
20	268-003	1	SET SCREW, 3/8 X 1 UNC, SQ HD
21	250-018	1	BOLT, 3/8 X 1 UNC
22	117-912	1	KEY
23	312-825	1	SPROCKET 80B11, 1-1/4 BORE
24	311-802	2	OFFSET LINK, #80
25	311-801	1	CONNECTOR LINK, #80
26	310-805	1	ROLLER CHAIN, #80 SI. STRAND, 57"
27	256-020	1	FLAT WASHER, 5/16"
28	R100-301	1	DRIVE SHIELD
29	312-834	1	SPROCKET 80Q45 C/W HUB
30	312-835	1	HUB, SPLIT TAPER, 2" BORE
31	909-001	1	KEY
32	902-010	1	KEY
33	250-019	3	BOLT, 3/8 X 1-1/4 UNC
34	256-006	1	FLAT WASHER, 5/8"
35	108-025	2	ADAPTER, 3/4-16 ORB X 3/4-16 JIC (MALE)

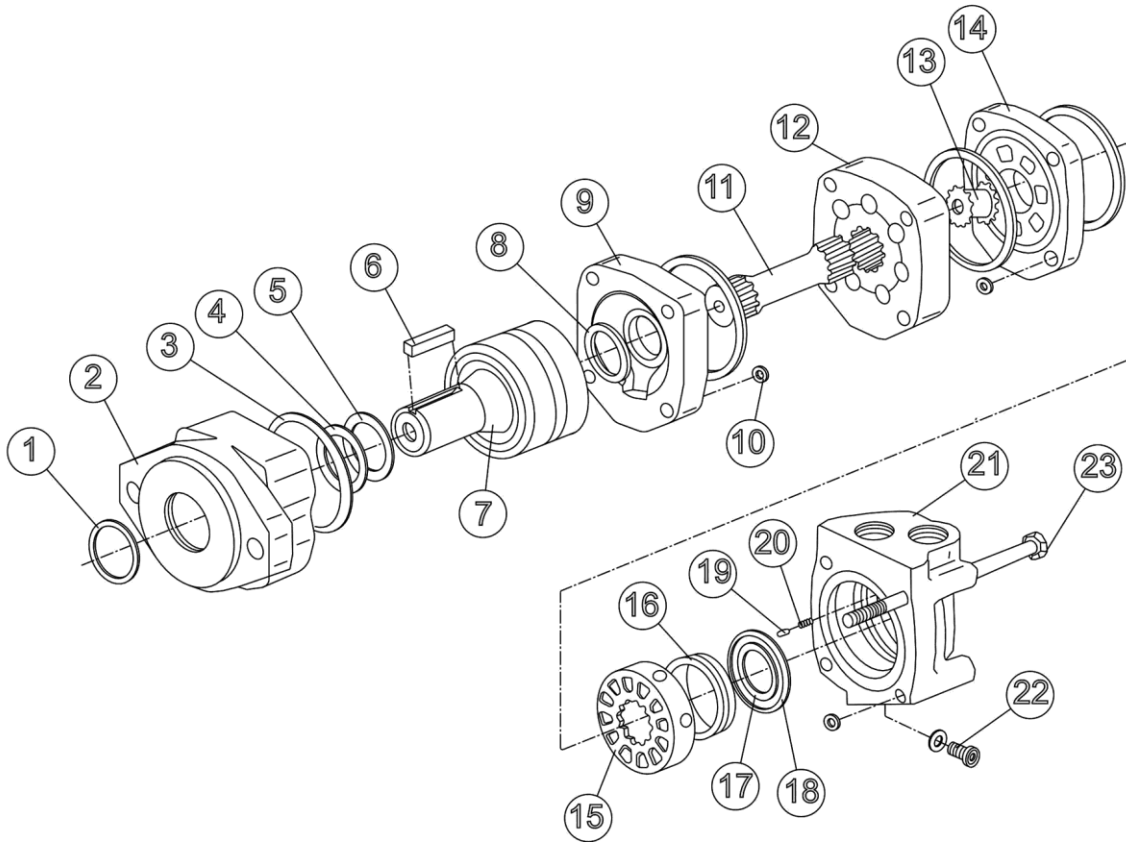
2500 GIANT - FLOW CONTROL KIT - REV 2010-05



ITEM	PART NO.	QTY.	DESCRIPTION
1	111-331	1	HYD. HOSE, 1/2 X 111" , 8 FJIC X 8 MORB W/ PIONEER END
2	111-333	1	HYD. HOSE, 1/2 X 95, 8 FJIC X 8 MORB W/ PIONEER END
3	108-045	1	ELBOW, 90 DEG. ADJ 7/8-14 ORB X 3/4 16 JIC 37 DEG
4	108-031	1	ELBOW, 90DEG, #8 JIC MALE X #8 JIC FEMALE SWIVEL
5	108-005	1	MALE TEE, 3/4-16 JIC 37 DEG,
6	111-153	1	HYD. HOSE 1/2" X 13", 8FJIC X 10M-ORB
7	111-154	1	HYD. HOSE 1/2" X 22-5/8", 8FJIC X 8M-ORB
8	250-003	2	BOLT, 1/4 X 2-1/2 UNC, GR5, PLATED,
9	270-025	2	LOCKNUT, 1/4 UNC, PLATED
10	133-0010	1	FLOW CONTROL VALVE, #10 ORB, 1500 PSI
11	126-116	1	TUBE ASSEMBLY ASPER DRAWING
12	108-025	2	ADAPTER, #8 MALE ORB TO #8 MALE JIC
13	108-046	1	ADAPTER, 3/4-16 JIC MALE X 7/8-14 ORB MALE
14	256-018	1	WASHER, 1/4"

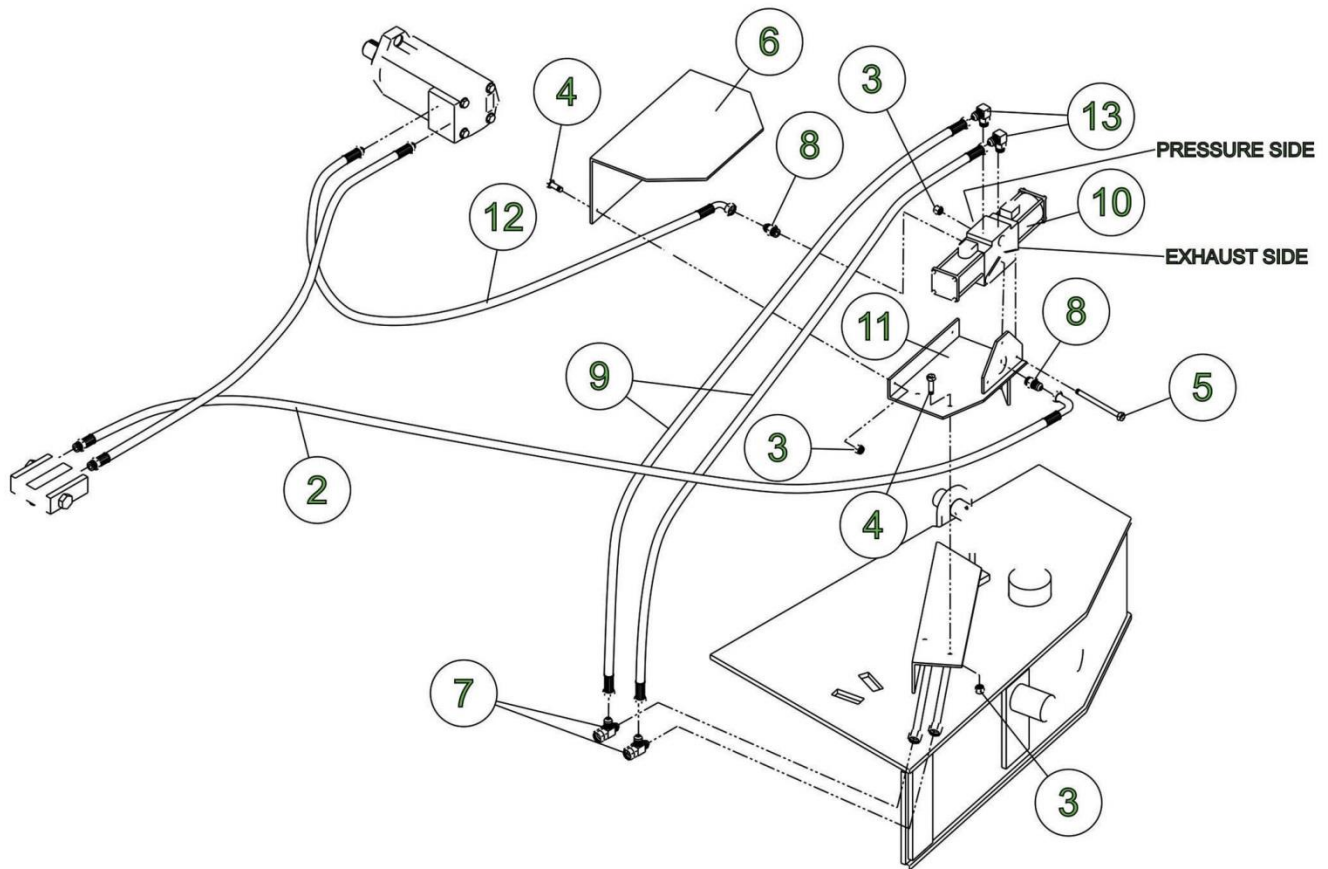
2500 GIANT REV2013-01

2500 GIANT - MOTOR, 116-006 - REV 2003-01



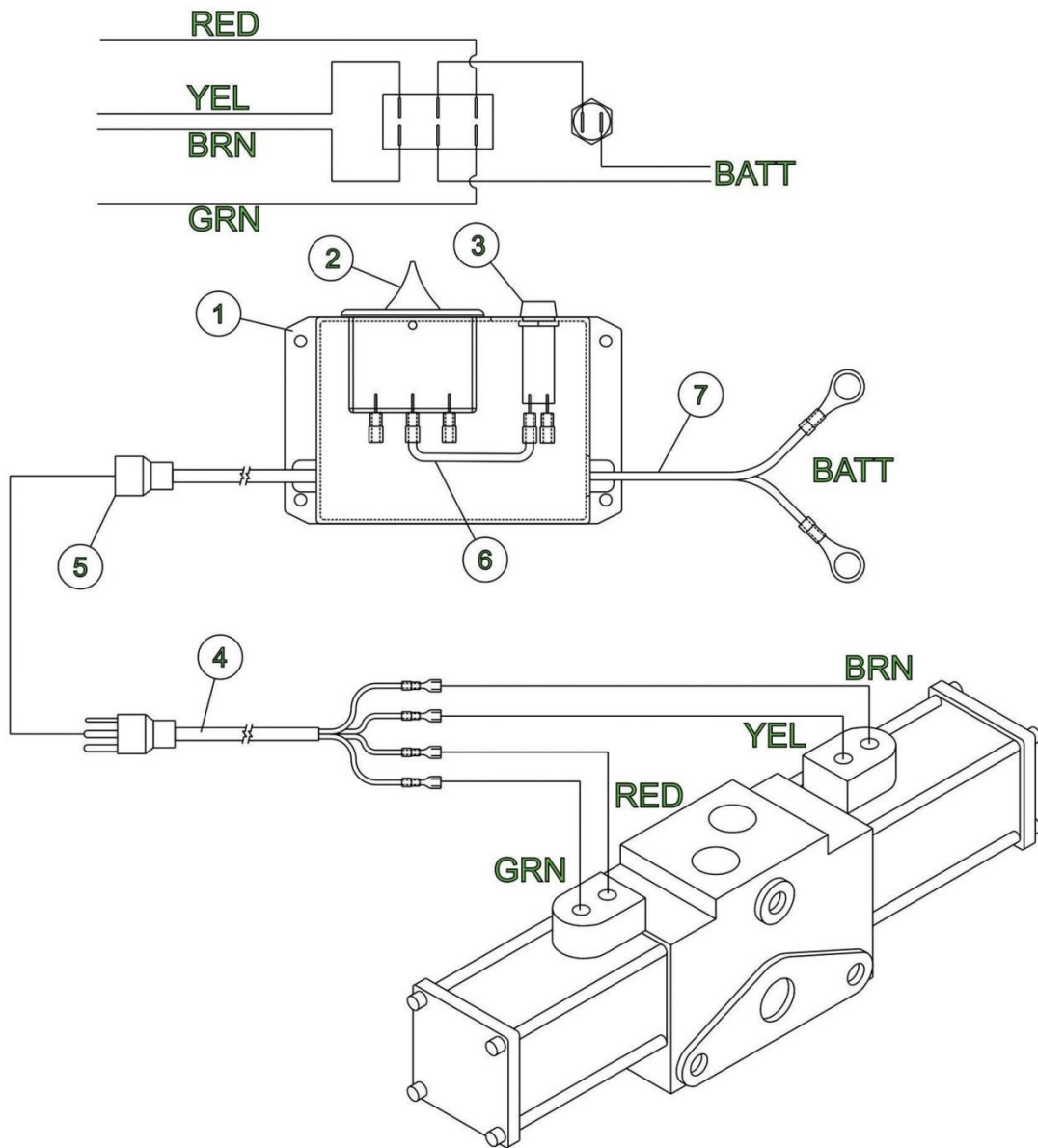
ITEM	PART NO.	QTY.	DESCRIPTION
2	117-960	1	HOUSING, BEARING, 2 BOLT
6	117-912	1	KEY
7	117-961	1	SHAFT & BEARING KIT
9	117-962	1	PLATE, WEAR
11	117-963	1	DRIVE (14.9 IN3 MOTOR)
12	117-964	1	GEROLER, 1.758" WIDTH
13	117-918	1	DRIVE VALVE
14	117-965	1	PLATE VALVE
15	117-966	1	VALVE
16	117-967	1	BALANCE RING
19	117-925	1	PIN
20	117-930	1	SPRING
21	117-969	1	HOUSING VALVE, 7/8-14 PORTS
22	117-932	1	PLUG ASSEMBLY, 7/16-20 UNF C/W O-RING
23	117-968	4	BOLT, 6.1" (14.9 IN3 MOTOR)
	117-970	1	SEAL KIT, INCLUDES# 1,3-5,8,17,18
	116-006	-	HYDRAULIC MOTOR, CHARLYNN2000, 14.9 IN3

2500 GIANT - REEL TYPE MOTOR VALVE KIT - REV 2003-02



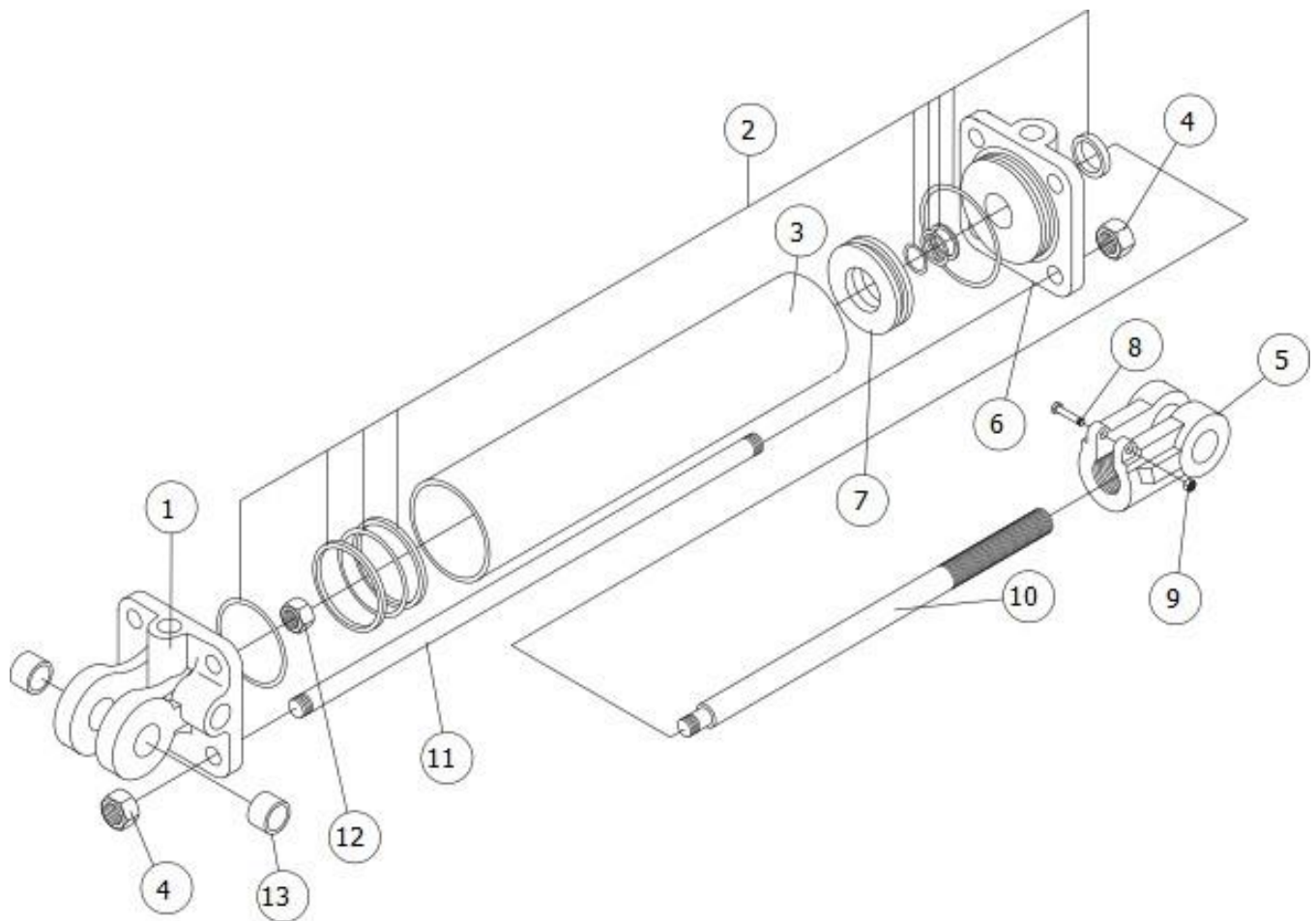
ITEM	PART NO.	QTY.	DESCRIPTION
2	111-245	1	HOSE ASSEMBLY, 28", 1/2" DW
3	270-017	7	LOCK NUT, 3/8" UNC
4	250-018	4	BOLT, 3/8" X 1" UNC
5	250-028	3	BOLT, 3/8" X 3-1/2" UNC
6	520-447	1	VALVE SHIELD
7	108-030	2	RUN TEE, SWIVEL, 3/4-16 JIC
8	108-025	2	ADAPTER, 3/4-16 ORBX 3/4-16 JIC
9	111-243	2	HOSE ASSEMBLY, 17", 3/8" SW
10	127-100	1	SOLENOID OPERATED VALVE 3/4-16 ORB, OPEN CROSSOVER
11	431-01	1	MOUNTING PLATE
12	111-244	1	HOSE ASSEMBLY, 44", 1/2 DW
13	108-043	2	ELBOW, 90 DEG. 3/4-16 ORB

2500 GIANT - MOTOR VALVE KIT (ELECTRICAL) - REV 2005-03



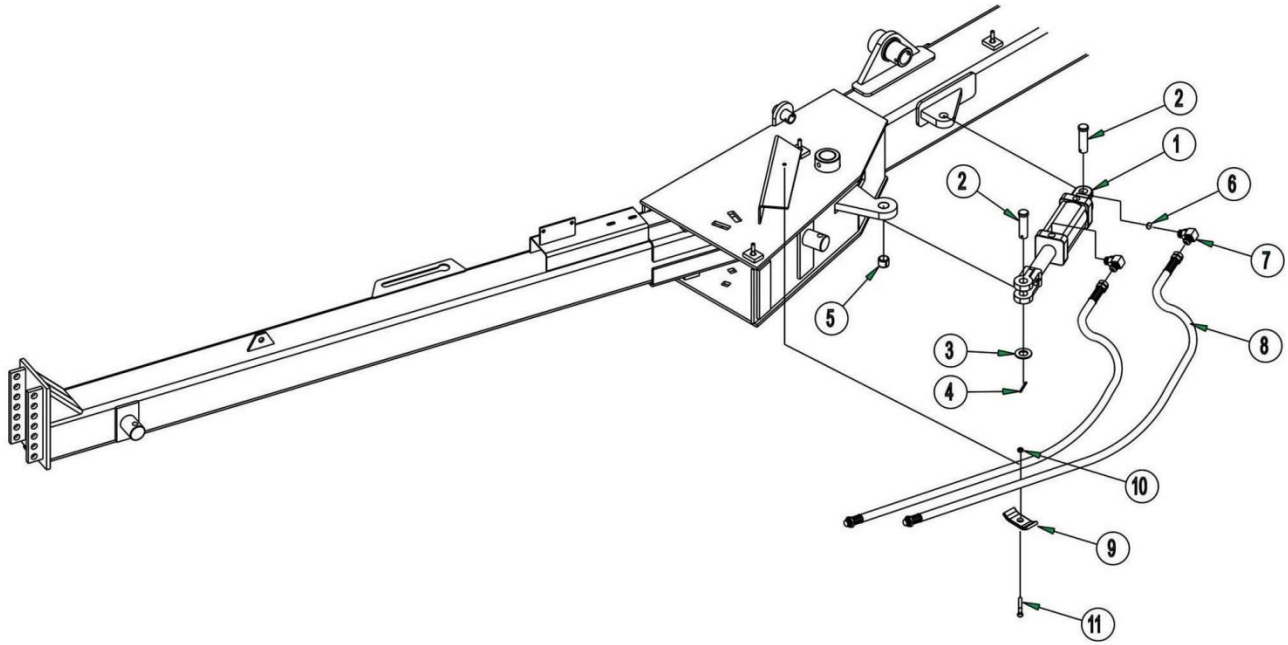
ITEM	PART NO.	QTY.	DESCRIPTION
1	276-317	1	MODIFIED ENCLOSURE BOX
2	276-108	1	SWITCH
3	275-010	1	FUSE
4	277-004	1	WIRING HARNESS, SOLENOID, 12"
5	277-003	1	WIRING HARNESS, SWITCH, 4"
6	276-297	1	JUMPER CABLE
7	276-318	1	POWER HARNESS
	276-320	1	COMPLETE SWITCH ASSEMBLY (REF 1-3, 5-7)

2500 GIANT - HYDRAULIC CYLINDER, 100-3271H - REV 2013-01



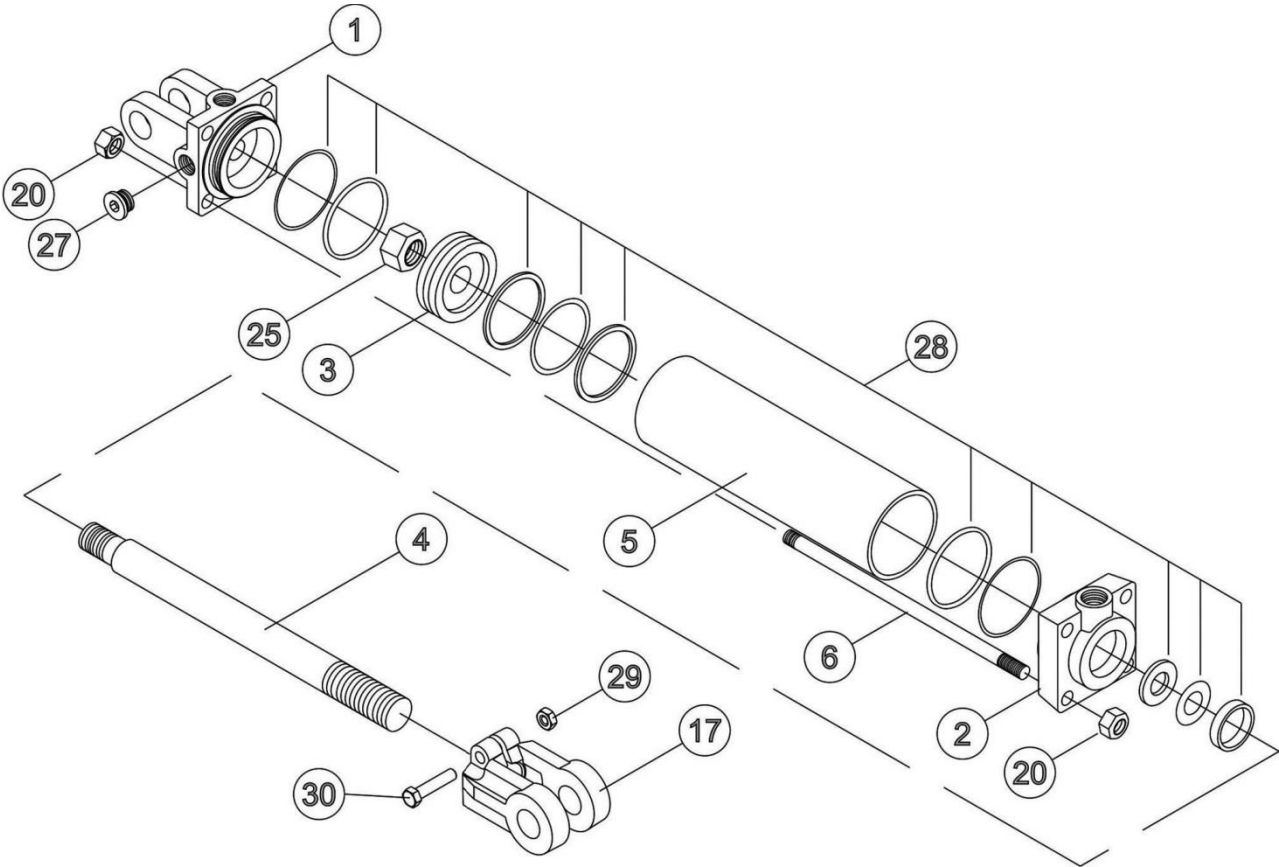
ITEM	PART NO.	QTY.	DESCRIPTION
1	101-214	1	CLEVIS CAP, TC
2	101-330	1	SEAL KIT
3	101-209	1	CYLINDER TUBE, 3 X 36
4	257-022	8	NUT, 1/2" UNC
5	101-206	1	ROD CLEVIS
6	101-328	1	ROD CAP 3", 30" OR 36", TH
7	101-327	1	PISTON
8	250-023	1	CLEVIS BOLT, 3/8 X 1-3/4 UNC
9	257-032	1	NUT, 3/8" UNC
10	101-210	1	ROD 3 X 36
11	101-211	4	TIE ROD, 3 X 36
12	101-023	1	PISTON NUT
13	362-010	2	TENSION BUSHING, 1" I.D. X 1 1/4" X 3/4"
14	100-3271H	-	COMPLETE CYLINDER

2500 GIANT - SWING HITCH OPTION - REV 2013-01



ITEM	PART NO.	QTY.	DESCRIPTION
1	100-3252H	1	CYL. TIEROD 3X5 INLINE PORTS
2	302-015	2	CLEVIS PIN, 1" X 2-7/8" U.L.
3	256-001	2	WASHER, 1"
4	271-005	2	COTTER PIN, 3/16" X 1-1/2"
5	362-015	1	TENSION BUSHING, 1 X 1-1/4 X 1 LONG
6	C000-006	1	RESTRICTOR
7	108-043	2	ELBOW
8	111-332	2	HYDRAULIC HOSE, 183"
9	C000-001	1	HOSE AND TUBE CLAMP
10	270-017	1	LOCKNUT, 3/8" UNC
11	250-023	1	BOLT, 3/8" X 1-3/4" UNC: GR5: PLATED

2500 GIANT - HYDRAULIC CYLINDER, 100-3252H - REV 2013-01

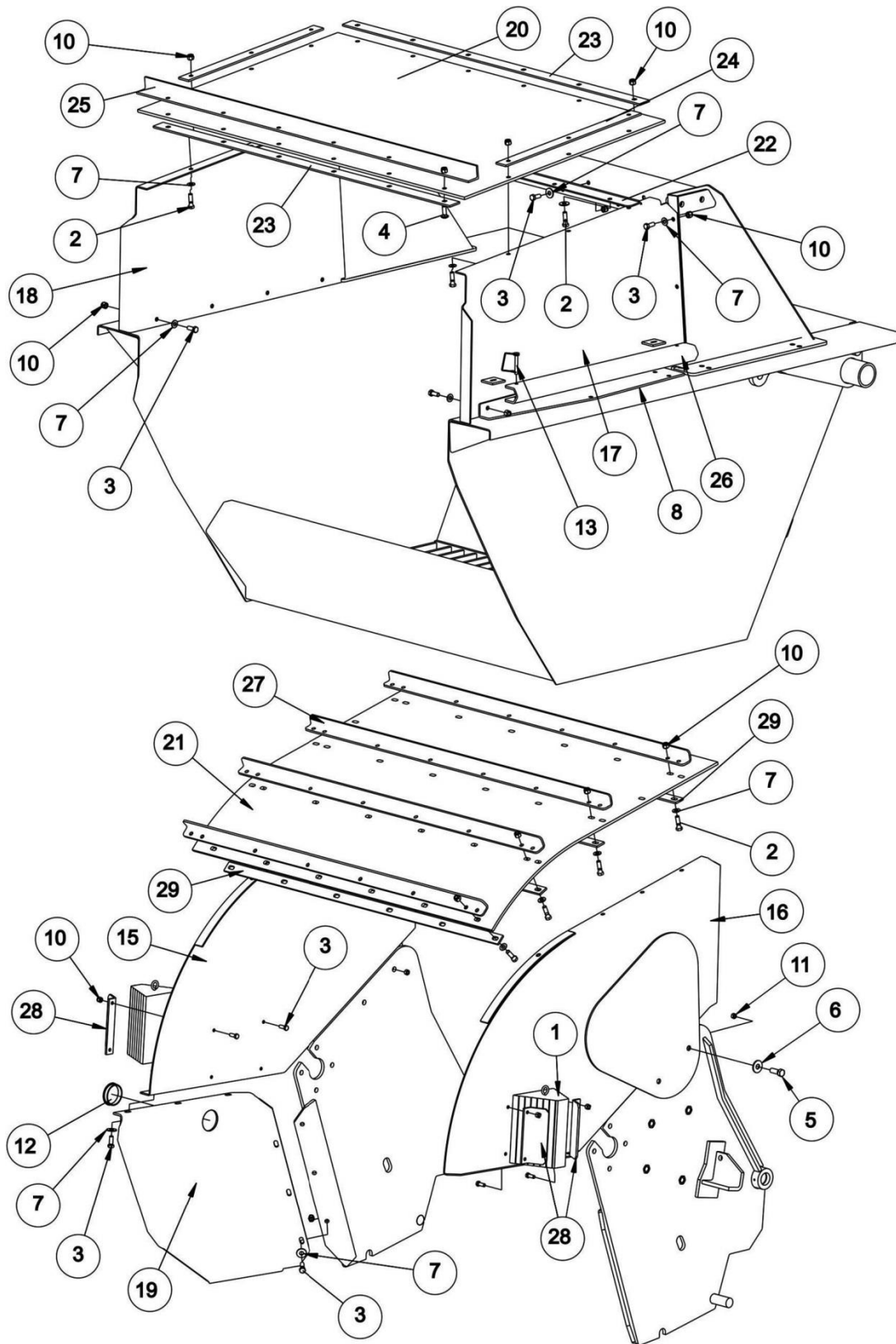


2500 GIANT - HYDRAULIC CYLINDER, 100-3252H - REV 2013-01

Continued...

ITEM	PART NO.	QTY.	DESCRIPTION
1	101-201	1	CLEVIS CAP
2	101-329	1	ROD CAP 3" TH
3	101-327	1	PISTON
4	101-176	1	ROD, 3 X 5
5	101-285	1	TUBE, 3 X 5
6	101-286	4	TIE ROD, 3 X 5
17	101-021	1	ROD CLEVIS
20	257-022	8	TIE ROD NUT
25	101-023	1	PISTON NUT
27	101-244	1	PORT PLUG, ORB
28	101-331	1	SEAL KIT
29	257-032	1	NUT, 3/8"
30	250-023	1	BOLT, 3/8" X 1-3/4"
31	100-3252H	-	COMPLETE CYLINDER

2500 GIANT- CE SHIELDING - REV 2013-09

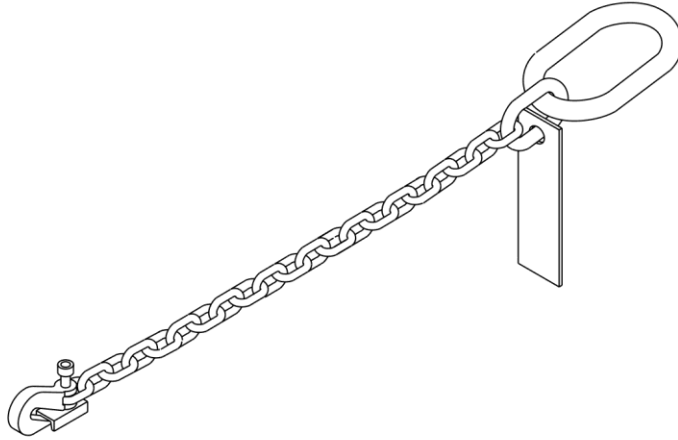


2500 GIANT REV 2013-01

2500 GIANT- CE SHIELDING - REV 2013-09

Continued...

ITEM	PART NO.	QTY.	DESCRIPTION
1	233-057	2	RUBBER WHEEL CHOCK 10"X8"X6"
2	250-060	53	BOLT 1/2" X 1-3/4" UNC GR5 PLATED
3	250-061	31	BOLT 1/2" X 1-1/4" UNC GR5
4	250-069	6	CARRIAGE BOLT 1/2" X 1-1/2" UNC GR5
5	250-095	4	BOLT, 5/8" X 1-1/2" UNC GR5 PLATED
6	256-006	4	WASHER 5/8"
7	256-011	68	WASHER, 1/2" ASA 9/16" X 1-3/8" X 0.109"
8	R100-317	1	CE BRACKET LEFT SIDE
9	R100-318	1	CE BRACKET RIGHT SIDE (NOT SHOWN)
10	270-007	88	LOCKNUT 1/2" UNC PLATED
11	270-031	4	LOCKNUT 5/8" HALF NUT GR2
12	280-151	1	HEYCO DOME PLUG PART #2455
13	302-030	4	QUICK PIN 3/8" X 2-1/4" UL DOCAP#44
15	R100-302	1	SIDE PANEL RIGHT 2500 GIANT
16	R100-303	1	LEFT SIDE PANEL 2500 GIANT
17	R100-304	1	LEFT SIDE PANEL BKT 2500 GIANT
18	R100-305	1	RIGHT SIDE PNL BKET 2500 GIANT
19	R100-306	1	LOWER RGH T SDE PLTE R100 CE
20	R100-307	1	2500 GIANT CE BUCKET BELTING
21	R100-308	1	2500 GIANT REEL BELTING
22	R100-309	1	BUCKET BELTINGMOUNT
23	R100-310	2	BRACE
24	R100-311	2	PLATE
25	R100-312	1	BRACE
26	R100-313	2	CYLINDER STOP 36"
27	R100-314	4	BRACE 2500 GIANT CE
28	R100-315	4	PLATE
29	R100-316	4	SUPPORT 2500 GIANT CE

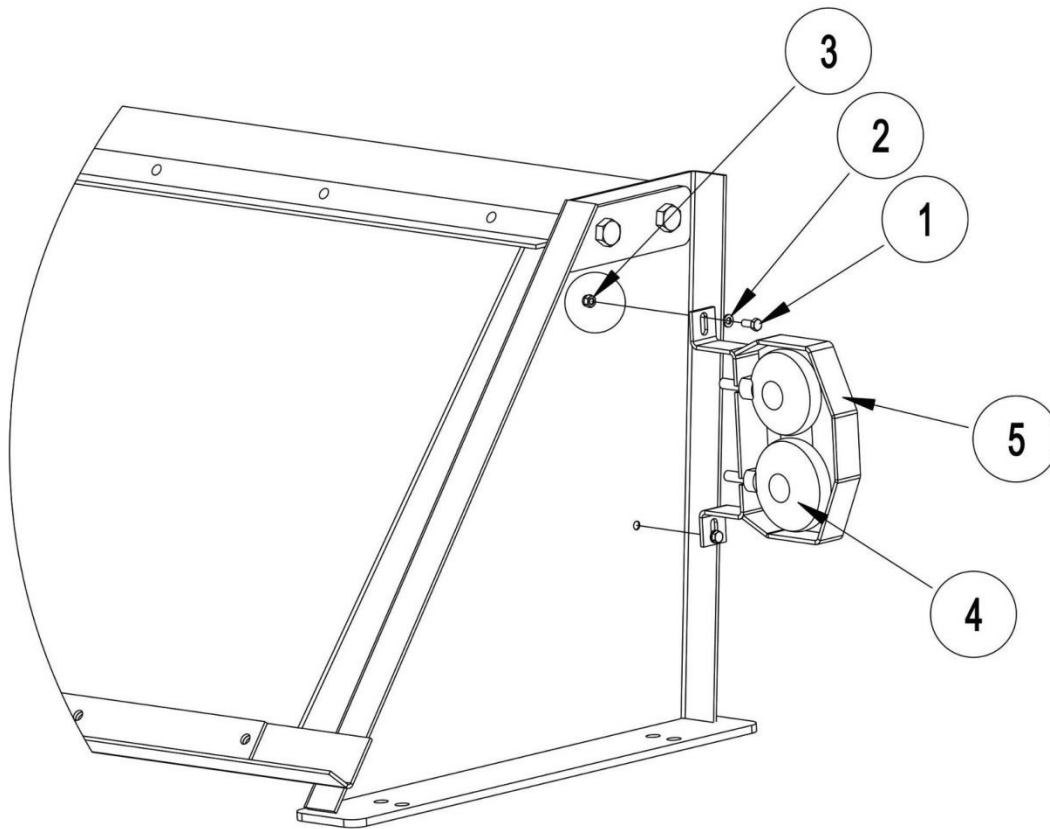


NOTE: 10,000 lbs capacity, 59" minimum length

NOTE: This Safety Chain is intended as an auxiliary attaching system per ASAE S338.3. The Safety Chain will help control the rotary cutter should it accidentally separate from the drawbar. Do Not Use the Safety Chain for Towing. Replace the entire chain if any link or end fitting is broken, damaged or stretched.

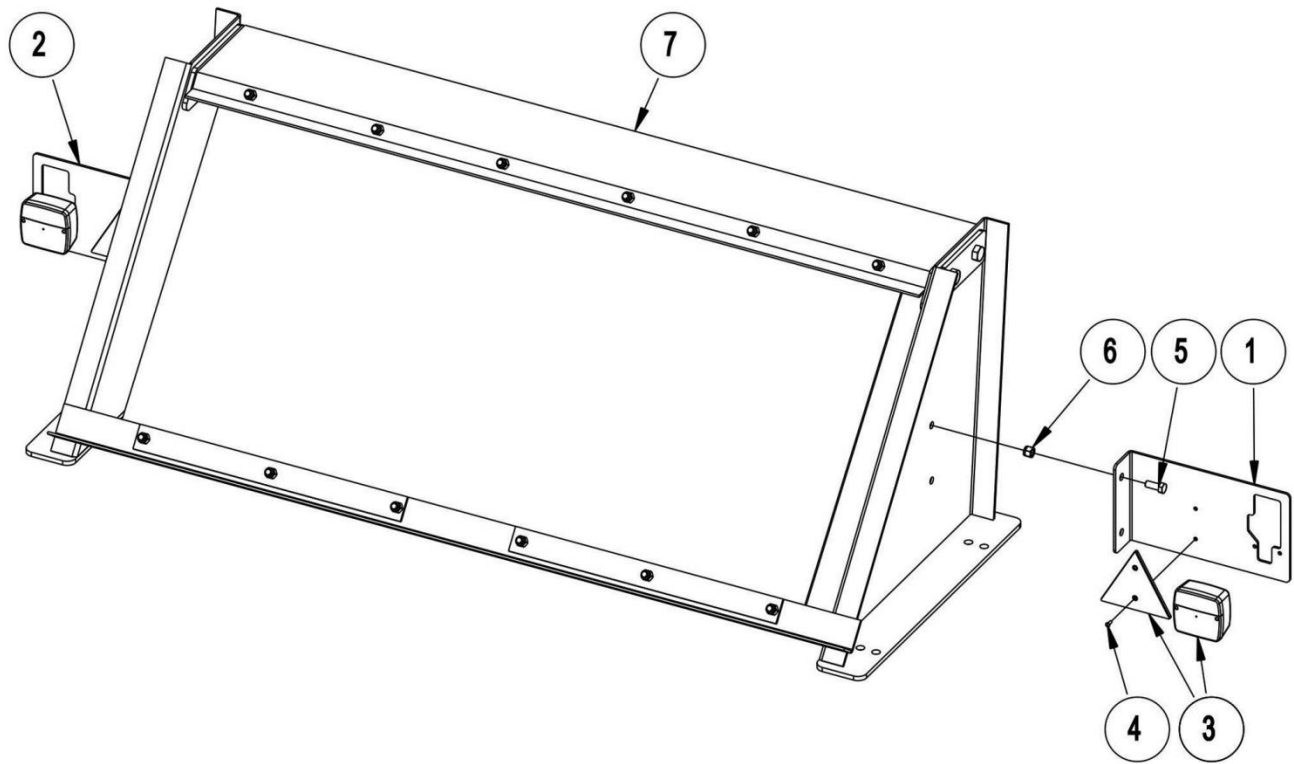
ITEM	PART NO.	QTY.	DESCRIPTION
1	S000-010	1	SAFETY CHAIN

2500 GIANT - TRANSPORT LIGHT KIT S000-035 - REV 2014-11



ITEM	PART NO.	QTY.	DESCRIPTION
1	250-006	4	BOLT 5/16" X 3/4" UNC GR5 PLATED
2	255-015	4	LOCKWASHER 5/16"
3	270-020	4	LOCKNUT 5/16" UNC PLATED
4	S000-088	1	SAFETY LIGHT KIT, INCLUDES WIRING HARNESS AND LIGHTS
5	S000-101	2	LIGHT BRACKET ADV. LGHTNG STLE
6	280-008	10	CABLE TIE 15" 120 LB. TENSILE
7	270-028	2	LOCKNUT 10-24 NYLOCK
8	251-151	2	10-24X3/4PHILLIPSMACHINESCREW
9	275-133	1	MAIN HARNESS, 25'
	S000-035	1	COMPLETE LIGHT KIT

2500 GIANT - EUROPEAN LIGHT KIT - REV 2013-11



ITEM	PART NO.	QTY.	DESCRIPTION
1	R100-681	1	GIANT LEFT EURO LIGHT MOUNT
2	R100-682	1	GIANT RIGHT EURO LIGHT MOUNT
3	S000-115	1	LIGHT SET 10MT CABLE
4	257-151	4	METRIC NUT M5 X 0.8
5	250-061	4	BOLT 1/2 X 1-1/4 UNC GR5
6	270-007	4	LOCKNUT 1/2 UNC PLATED
7	73-70	1	CRATE FIXED ROCK DEFLECTOR

